



Refresh
Yourself
With

'CORONA'
SPARKLING DRINKS & SQUASHES

'CORONA' SQUASHES ARE SWEETENED
WITH SUGAR ONLY

If you experience any difficulty in obtaining 'Corona' please write
in the first instance to :

THOMAS & EVANS LTD., HEAD OFFICE : PORTH. GLAM.

SOUTH WALES BRIDGE CONGRESS



AT ESPLANADE AND SEABANK HOTELS

PORTHCAWL

November 1st, 2nd, 3rd and 4th
1951



PRE-CONGRESS PAIRS :
Wednesday, 31st October



Headquarters
ESPLANADE HOTEL, PORTHCAWL

PORTHCAWL

ESPLANADE HOTEL

Telephone : Porthcawl 1 and 61.



A.A. Fully Licensed. R.A.C.

OPEN THROUGHOUT THE YEAR

Best Position on the Sea Front. Within easy reach of three First-class Golf Courses.

Hot and Cold Running Water in all Bedrooms. Self-contained Bedrooms, Sitting Room and Bathroom Suites. Bedroom and Bathroom Suites. Lift to all Floors.

Billiards Room. Garage and Car Park Adjacent. Night Porter.

Restaurant open to Non-Residents

CONGRESS HEADQUARTERS

We respectfully suggest that you stay at
THE CONGRESS HEADQUARTERS.

CONGRESS OFFICIALS :

President :

T. G. BONNYMAN, Esq.

Chairman :

HERBERT J. THOMAS.

Executive Committee :

Mrs. JACK COPE.

HAROLD J. GOULD.

NATHAN GABLE.

D. HUBERT JONES, A.S.A.A.

TREVOR M. WILLIAMS, J.P.

General Committee :

J. BOALCH.

SYDNEY HOFFMAN.

JACK COPE.

J. EMLYN LEWIS.

JOHN FOGARTY.

Councillor MICKAELSON.

GEORGE FOX.

Mrs. GEORGE MILLS.

Mrs. GASKELL.

LAIDLAW MURRAY, J.P.

Mrs. HANDO.

STANLEY REED.

Mrs. O. B. HANDS.

Mrs. E. TAYLOR.

O. B. HANDS.

Miss MARGARET THOMAS.

Tournament Director :

TERENCE REESE.

Hon. Secretary :

Mrs. H. J. GOULD,
37, Llandennis Avenue,
Cardiff.

Hon. Organiser :

CYRIL E. BLOOM,
"Mor Hafren,"
West Drive, Porthcawl.
Telephone : Porthcawl 131.

Telephone : Llanishen 701.

CONGRESS OFFICE :

ESPLANADE HOTEL, PORTHCAWL.

Presentation of prizes will take place at the Esplanade Hotel, on November 4th, at 10.30 p.m.

Mrs. T. G. Bonnyman and the Chairman of the Porthcawl U.D. Council, Mr. E. Stanley Thomas, have kindly consented to perform this ceremony.

CENTRAL GARAGE AND ENGINEERING Co. Ltd.

COMPLETE TECALEMIT INSTALLATION

:: AUSTIN SALES AND SERVICE ::
Garage and Parking Accommodation
Expert Mechanics always in attendance

YOUR CENTRE FOR SALES & SERVICE

New Car Sales and Service
Tyres, Tubes and Accessories
:: Austin Sales and Service ::

WELDING

Engine Reboring :: Crank Shaft Grinding
Re-metalling Connecting Rods
Complete Engine Overhauls

Adjoining the Front and convenient for Shopping Centre

MARY STREET :: PORTHCAWL

Telephone Porthcawl 11

WHEN YOU'RE IN CARDIFF

**Arrange, in advance,
to meet your Friends
in that delightfully
convenient rendezvous
... the Rest Room at
David Morgan The Hayes**

DAVID MORGAN Ltd., CARDIFF

Introduction.

Have you considered the possibilities of a Bridge Congress which is also a holiday, combining the gaiety of the sea side on a natural unspoilt coast line, with the pleasures of a restful country side, set amongst some of the most enchanting scenery in Wales? You haven't? Then it is really time for you to get acquainted with Porthcawl, overlooking Somerset and Devon from the Welsh Coast.

This year we hope to make our Congress a holiday which will live in your memories.

We have pleasure in announcing that Mr. Terence Reese has kindly consented to act as tournament director. Mr. Reese's fame as a bridge player is wide spread, and he is the author of many books on bridge, including the "Acol System." He was a member of the successful British Canasta Team which has just played the Americans in London, and has also written several books on this new and fascinating game. For the benefit of Bridge players and others who are now taking up Canasta, Mr. Reese will be giving two lectures on this game, on Saturday and Sunday morning. Needless to say, this is a golden opportunity for learning the finer points of the game.

With regard to the Congress itself. We have made every effort to ensure the attendance of a number of the leading Bridge players from all parts of the Country, many having promised to attend. The events of the Congress have been so arranged that everyone may participate, and we extend a special welcome to all those who have never previously played in a Congress. The rules are simple, and will be explained clearly by the tournament director.

The hotels placed at your disposal are luxurious, and beautifully situated on our glorious coast line, and no effort will be spared to ensure your comfort and convenience.

For those who would care to explore our coast, bus tours have been arranged, and will leave the hotels daily.

The three magnificent golf courses, including the Royal Porthcawl, are within easy reach, and we are hoping to arrange morning competitions for those interested.

I would like, on behalf of the committee and myself, to thank the generous donors of Cups and Trophies and the Porthcawl Council for their kind co-operation and assistance.

To make our work easier, would you please enter your Bridge events and purchase your season tickets early, as priority will be given to season ticket holders.

Remember our officials are present to help you, and we shall also be pleased to provide a partner for you for any competition.

Finally, any competitor, who finds difficulty in obtaining suitable hotel accommodation, should contact me direct and I shall be only too pleased to do my very best to assist.

PORTHCAWL IS WAITING TO WELCOME YOU.

MOR HAFREN,
WEST DRIVE, PORTHCAWL.

CYRIL E. BLOOM,
Hon. Organiser.





**Your
Trump
Card . . .**

**The
Unfailing
Service
of**

G A S

Wales Gas Board - - - Porthcawl Undertaking

Super Luxury Travel

S. PROTHEROE & SON

Coach Proprietors

1, VICTORIA AVENUE, PORTHCAWL

Telephone 488 and 793

Hire your Coach with Us - Distance no object

Furnishings of Distinction and Quality

Approved Distributors for :
 "House Proud" Kitchen
 Cabinets.
 "Slumberland"
 Spring Interior Mattresses.
 "Sobell" Radio.
 "Marmet," "Pedigree" and
 "Swan" Prams.
 "Hoover" Cleaners
 and Washing Machines.
 "Parker Knoll" Chairs.

COMPLETE
 HOUSE FURNISHERS

EST. 1915.

TEL. 724.



The Porthcawl Furnishing Co. Ltd.

67, John Street, Porthcawl

You feel younger and live longer after a visit to
"The Paradise by the Sea"

PORTHCAWL



FOR A REALLY ENJOYABLE HOLIDAY
NEVER A DULL MOMENT !

★ OUTDOOR ATTRACTIONS

Sunny Aspect. Health-giving Breezes. Bathing. Five Bays. Children's Paddling Pool. Unrivalled Golf. Bowls. Tennis. Putting and Children's Playground. Cricket. Fishing and Boating. Sea Cruises per P. & A. Campbell Pleasure Steamers. Riding Schools. Open-air Amusement Park. Glorious Walks and Rambles along 6½ miles unspoilt natural Coastline. 70 acres of Sea-girt Common. Over 300 acres of Sand Dunes.

★ INDOOR ENTERTAINMENTS

GRAND PAVILION. Seating capacity over 1,000. Resident Professional Orchestra and Organist. Morning Concerts during inclement weather. Afternoon and Evening Dances (Tuesdays, Old English). Thursdays, Variety Concerts, etc. Fridays, Plays by leading professional and amateur companies. Sundays, Orchestral and Celebrity Concerts, etc.

CINEMAS. Casino and Coliseum, John Street. Open daily including Sundays. AMUSEMENT PARK, Coney Beach.

Guide 2½d. or Free Brochure, etc., from Publicity Officer,
Grand Pavilion, Porthcawl.

For Rail Services enquire at Stations, Offices, or Agents.

LIST OF EVENTS.

1. PRE-CONGRESS PAIRS. This event will be played in one session. Aggregate scoring will be used, and a number of prizes will be given.

*2. CHAMPIONSHIP TEAMS OF FOUR for the "Porthcawl Cup." For this event there will be one qualifying round and a final session. This Cup has been presented by E. Stanley Thomas, Esq., Chairman of the Porthcawl U.D. Council, and will be held by the winning team for a period of one year.

Prizes will be given to the winners and runners-up.

*3. LADIES' TEAMS OF FOUR. This event will be played in one session. The "Isaac Sherman Cup" will be presented and held by the winning team for one year and prizes will be given to the winners and runners-up.

*4. CONGRESS TEAMS OF FOUR. This event will be played in one session and prizes will be given.

*5. THE "FLITCH CUP." One session event. Open only to husband and wife pairs. The "Vivian Searle Cup" will be held for one year by the winning pair and prizes will be given.

*6. CHAMPIONSHIP OPEN PAIRS. For this event there will be a qualifying round and a final session. The "Cyril E. Bloom Cup" will be held for one year by the winning pair, and prizes will also be given.

7. MIXED PAIRS. A one-session event. Aggregate scoring, prizes to be given to the winning N/S and E/W pairs.

8. NOVICE PAIRS. This event will be restricted to players who have not previously won a prize at a Bridge Congress. Aggregate scoring, and prizes will be given to the winning N/S and E/W pairs in each session.

9. NOVICE PAIRS FINAL. Eligible only to pairs who finish First, Second or Third in one of the previous Novice Pairs Competitions. This number may be increased at the discretion of the Tournament Director.

10. CONGRESS PAIRS. Each session will include a Congress Pairs Contest played on aggregate scoring. Prizes will be given to the winning N/S and E/W pairs in each session.

11. GRAND FINALE. CHAIN EVENT. Open to one and all. You do not require a partner for this Competition.

*Indicates Major Congress Events for which a Cup will be presented

JACK POWELL

Turf and Football Accountant

(Member of B.P.A.)

Credit Accounts opened without delay from £2 upwards. An introduction by a Client is sufficient reference.

DAILY LETTER SERVICE

Winnings are despatched immediately the results are known. The Tape Machine is installed and results are available to clients, together with general racing information.

I personally attend all Welsh Race Meetings - No. 1 Position - Nearest Bookmaker to the Paddock.

**12 DUNRAVEN PLACE
BRIDGEND**

Telephones

BRIDGEND 1192 all lines. "SCEPTRE, BRIDGEND."

Telegrams

THOS. PHILLIPS & SONS LIMITED.

High Class Wine and Spirit Merchants

76, JOHN STREET, PORTHCAWL

Telephone 19.

Agents for Sandeman's Ports and Sherries

All leading brands of
Champagne, Liqueurs, Claret and Burgundy

"God in His mercy sent the grape
To bless both great and small;
'Tis little fools who drink too much,
And big ones none at all."

IN ONE DAY

*we can recapture the
loveliness of your clothes*

By scientific cleaning with the most up-to-date machinery we have created a service which thousands have come to rely upon. Your clothes will last longer and look lovelier if you entrust us with their cleaning.

Also at:

Aberavon - Bridgend
Morriston - Newport
Neath - Port Talbot
Penarth - Pontardawe
Porthcawl and Swansea.

- ★ 3-HOUR CLEANING SERVICE
for Emergencies
- ★ 1-DAY NYLON REPAIR SERVICE.
- ★ SPEEDY GARMENT REPAIRS
BY EXPERT TAILORS

FLETCHER'S

THE ONE-DAY CLEANERS

9 ST. JOHN SQUARE - - CARDIFF

THE SOUTH WALES (EAST) AND MONMOUTHSHIRE TRUSTEE SAVINGS BANK

HEAD OFFICE: 119, ST. MARY STREET

CARDIFF

HAS OVER

27,000 DEPOSITORS

WITH TOTAL BALANCES EXCEEDING

£3,600,000

Sums up to £500 per annum may be deposited
Withdrawals at Short Notice.

INTEREST

$2\frac{1}{2}\%$

STATE SECURITY

Branches at:

CARDIFF: Splott Road.
NEWPORT - BRIDGEND
TONYPANDY - BARRY
EBBW VALE - ABERDARE

INTEREST

$2\frac{1}{2}\%$



IF YOU WANT A BETTER DEAL

you want

HUNT'S

CHAS. HUNT AND COMPANY

Printers and Stationers in Cardiff since 1899

Printing . . 45-46 FREDERICK STREET

Stationery . . 41 BRIDGE STREET . . Tel. 1013/4



Lace Allure

The artistry of black needlerun lace weaves magic over this sumptuous gown of turquoise ottoman silk. This lavish lace echoes its charming theme in the stole to hug around cool shoulders.

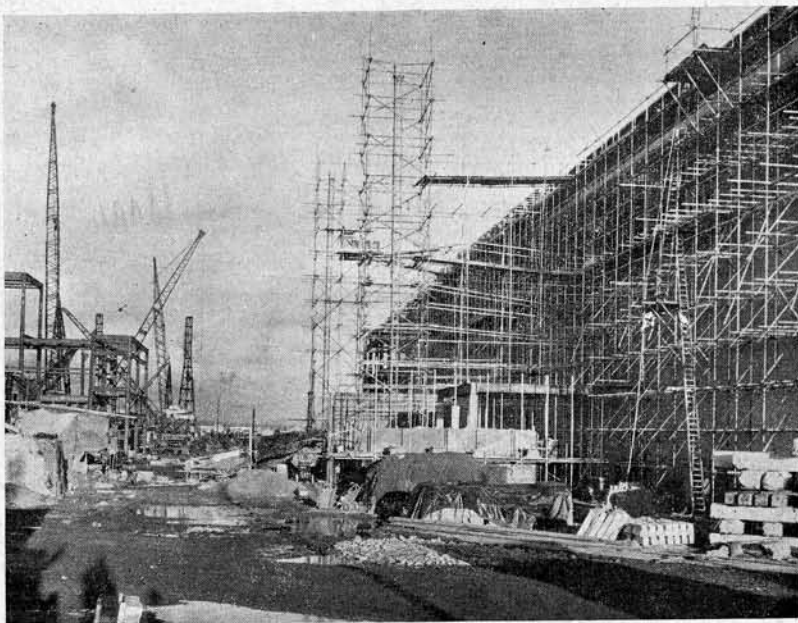
Selected from our wonderful collection of model gowns for gala evenings — you may order it in the colour of your choice.

JAMES HOWELL

JAMES HOWELL & CO. LTD.

ST. MARY STREET CARDIFF

Telephone 3130



PHOTOGRAPH shows work in progress on the Superstructure to the Uskmouth Generating Station, near Newport, (Mon.) for the British Electricity Authority (South Wales Division).

General Building and Civil
Engineering Contractors

JOHN MORGAN
(BUILDERS LTD.)

NORTHUMBERLAND LODGE
CATHEDRAL ROAD
CARDIFF

*Consulting
Civil Engineers*

Messrs. L. G. Mouchel
and Partners Limited

36-38 Victoria Street,
LONDON, S.W.1.

TELEPHONE CARDIFF 9340 (SIX LINES)

ALSO AT LONDON AND LIVERPOOL

RULES AND CONDITIONS.

The organisers reserve the right to refuse any entry without assigning any reason.

Recognised Bidding systems may be used but must be disclosed to opponents upon request. No Private or unpublished system may be used.

Venues for all events as advertised in this Brochure will be observed as far as possible but, the committee reserve the right to change the venue and alter the programme if they consider it necessary.

Due notice of any change will be given daily by notices in the main hall of the Esplanade Hotel.

No money stakes of any kind will be allowed nor may a competitor make a "book" on any event or events.

The Tournament Director retains the right to close any event 15 minutes before the advertised time of play. Competitors therefore are requested to be in their places by this time.

All competitors will be issued with badges/tickets on payment of their entrance fees. These must be shown and exchanged for score sheets before entering the rooms of play.

Mr. TERENCE REESE

WILL TALK ON

"CANASTA"

AT 11.30 A.M. ON SATURDAY AND SUNDAY,

AT THE

ESPLANADE HOTEL.

ADMISSION: 2/6d. PER LECTURE.

M. GABLE & CO.

Ladies' Hairdressers

55, JOHN ST., PORTHCAWL

Telephone: Porthcawl 141

*Expert Staff in attendance for
Hair Styling, Tinting, Bleaching
Facials, Manicure, Etc.*

FOR THE CONVENIENCE OF CONGRESS VISITORS, CLIENTS
MAY, BY REQUEST, RECEIVE TREATMENT AT THEIR HOTELS.

MARINE HOTEL

A.A. Unlicensed. R.A.C.

ADJACENT TO CONGRESS HEADQUARTERS

A comfortable family Hotel right on the Sea Front.

Recently Enlarged and Refurnished.

OPEN THROUGHOUT THE YEAR

Lounge. Smoke Rooms. Separate Tables in Dining Room.
Hot and Cold Running Water in all Bedrooms. Garage and Car
Park Adjacent.

Restaurant open to Non-Residents. Telephone: Porthcawl 47.

Special Terms for Congress Visitors - - 22/6d. per day.

Programme

WEDNESDAY, 31st OCTOBER

7.30 p.m.	Pre-Congress Pairs	Venue. Esplanade.
-----------	--------------------	----------------------

THURSDAY, 1st NOVEMBER

FIRST SESSION

2.15 p.m.	Ladies' Teams of Four	Venue. Seabank.
2.15 p.m.	1st Congress Open Pairs	Esplanade.

SECOND SESSION

7.45 p.m.	Fitch Pairs Cup	Seabank.
7.45 p.m.	Novice Pairs	Esplanade.
7.45 p.m.	2nd Congress Open Pairs	Esplanade.

(Continued on page 21).

Visit . . .

A. G. PHILLIPS

●
For . . .

VEGETABLES, FRUIT
FLOWERS & SERVICE

Daily Deliveries

●
9, Well Street :: :: Porthcawl

Telephone 180

AN UNBEATABLE HAND

CLEAN, EFFICIENT, SILENT.
THE INVISIBLE HAND THAT
HELPS IN INDUSTRY, ON THE
FARM AND IN THE HOME—
ELECTRICITY.



R. SAMPSON & SON

*The Men's Wear
Specialists*

**126, JOHN STREET
PORTHCAWL**

Telephone : 577



THE TOWN'S OLDEST OUTFITTERS

HAWKINS

85, JOHN STREET, PORTHCAWL

FISHMONGER & POULTERER

Fresh Boiled Shell Fish Daily
We specialise in CRABS, LOBSTERS, PRAWNS

GRAMS : HAWKINS, PORTHCAWL PHONE: 75

FOR . . .
FASHIONS and FABRICS
LINENS and FURNISHINGS

Thomas & Moore Ltd.

GENERAL DRAPERS AND LADIES' OUTFITTERS

*11, Lias Road,
Porthcawl.*

DISTINCTIVE MERCHANDISE ALLIED
TO THE BEST SERVICE . . . MAKES
SHOPPING FOR YOU A PLEASURE

Programme—continued

FRIDAY, 2nd NOVEMBER

	Venue.
10.30 a.m. Motor Coach Tour.	Esplanade.

THIRD SESSION

2.15 p.m. Mixed Pairs	Esplanade.
2.15 p.m. 3rd Congress Open Pairs	Esplanade.
2.15 p.m. Congress Teams of Four	Seabank.

FOURTH SESSION

7.45 p.m. Championship Teams of Four (Qualifying Round).	Seabank.
7.45 p.m. Novice Pairs	Esplanade.
7.45 p.m. 4th Congress Open Pairs	Esplanade.

(Continued on page 23).

The Management of **SANDVILLE, PORTHCAWL** *extend*

A WARM WELCOME AND ALL GOOD WISHES TO VISITORS
ATTENDING THE PORTHCAWL BRIDGE CONGRESS.

THE "SANDVILLE" PRIVATE HOTEL

*Established over 30 years is situated adjoining the Congress
Rooms, Shopping Centre and Promenade.*

We are pleased to offer Bridge Players and Visitors to the
Congress our first class hospitality and accommodation.

Lounges on Ground and First Floors. Twenty Bedrooms,
with hot and cold water. Spring Interior Beds throughout.
Garages adjacent.

Resident Proprietors : Mr. & Mrs. J. THOMAS, Miss C. A. THOMAS.
Tel. : Porthcawl 15.

WYNDHAM

THE FIRST NAME YOU
THINK OF IN FURNITURE

CASH OR EASY TERMS

WYNDHAM FURNISHERS

(BRIDGEND) LTD.

1, Wyndham Street, Bridgend

A Square Deal! A Shake of the Hand! A Friend for Life!

POWELL & VERITY

F.A.L.P.A.

A.A.L.P.A.

AUCTIONEERS, VALUERS & ESTATE AGENTS

HOUSE AGENTS

WE ARE THE LARGEST
Should you wish to buy or sell
any class of property we
offer you our unrivalled experience
and unfailing courtesy.
IN THIS DISTRICT

69, JOHN STREET, PORTHCAWL,

Also

10, MARKET ST., BRIDGEND and 43, STATION RD., PORT TALBOT.

Telephones: PORTHCAWL 497. BRIDGEND 255. PORT TALBOT 807.

Agents for
THE WOOLWICH EQUITABLE BUILDING SOCIETY.

Programme—continued

SATURDAY, 3rd NOVEMBER

	Venue.
10.30 a.m. Motor Coach Tour.	Esplanade.
11.30 a.m. Canasta Lecture by Terence Reese.	Esplanade.

FIFTH SESSION

2.15 p.m. Open Pairs Championship (Qualifying Round).	Seabank.
2.15 p.m. 5th Congress Open Pairs	Esplanade.

SIXTH SESSION

7.45 p.m. Championship Teams of Four (Final Round).	Esplanade.
7.45 p.m. Novice Pairs	Esplanade.
7.45 p.m. 6th Congress Open Pairs	Esplanade.

(Continued on page 27).

Prom Studios

25, THE ESPLANADE
PORTHCAWL

THE CAMERA CENTRES

75, STATION ROAD,
PORT TALBOT

A LASTING SOUVENIR OF THE CONGRESS

OUR PHOTOGRAPHERS WILL BE PRESENT AT THE
BEGINNING AND END OF EACH SESSION

EVERYTHING PHOTOGRAPHIC

CAMERAS - PROJECTORS - FILMS
ENLARGERS - CHEMICALS - BOOKS

GOOD BINOCULARS

FORTUNES —
ARE MORE EASILY WON ON

>
SHERMANS
<

BECAUSE THERE ARE
FEWER MATCHES TO FORECAST

Send for Free Coupons now to
SHERMANS POOLS LTD., ST. MARY ST., CARDIFF

Hopkin Morgan

BAKERIES AND SHOPS —
THROUGHOUT SOUTH WALES

Noted for the
Famous **"SUNMADE" Bread**

WE bake it — YOU eat it
Everybody recommends it!

Did you know we have an **EXTENSIVE CATERING DEPARTMENT** and can make all arrangements for your

DANCES : WEDDINGS : RECEPTIONS
DINNERS : COCKTAIL PARTIES : LUNCHEONS

We can also arrange Parties in your own Home.

JUST A PART OF THE HOPKIN MORGAN SERVICE



FASHIONS

★
MEN'S WEAR

★
CARPETS

★
FURNISHINGS

★
FABRICS

★
FANCY GOODS

"The Store for Good Clothes"

SECCOMBES

QUEEN STREET : CARDIFF

Get Fit for your Bridge

BY TAKING A

TURKISH BATH

(STEAM, VAPOUR OR ELECTRIC)

at

CASTLE COURT BATHS & HEALTH INSTITUTE

Trained Male and Female Nurses in Attendance

CASTLE COURT (opposite Angel Hotel) CARDIFF

Tel. 5608.

B. Fulgoni & Sons

**Specialists
in
Coffee and
Ice Cream**

You should note our addresses:

2 NEW ROAD :: SEA VIEW BAR :: STATION BAR
(Eastern Promenade) (Gt. Western Yard.)

**QUALITY
SERVICE
COURTESY
SATISFACTION**

**IVOR HARDING
AND SONS**

**High Class Butchers and Poulterers
JOHN STREET, PORTHCAWL**

If we have not already the privilege
of your patronage, we shall be
pleased to serve you.

TELEPHONES : 116 and 505



Programme—continued

SUNDAY, 4th NOVEMBER

10.30 a.m.	Motor Coach Tour.	Venue. Esplanade.
11.30 a.m.	Canasta Lecture by Terence Reese.	Esplanade.

SEVENTH SESSION

2.15 p.m.	Open Pairs Championship (Final Round).	Seabank.
2.15 p.m.	Novice Pairs Championship	Seabank.
2.15 p.m.	7th Congress Open Pairs	Esplanade.

EIGHTH SESSION

7.30 p.m.	Grand Finale—Chain Event	Esplanade.
7.30 p.m.	8th Congress Open Pairs	Esplanade.
10.0 p.m. approx.	Prize Giving	Esplanade.

PORTHCAWL MOTORS LTD.

Agents for
Hillman - Sunbeam - Humber

We have Undercover Garage for over
100 Vehicles

**ESPLANADE GARAGE - MARY STREET
PORTHCAWL**

H. T. COMLEY

*For the Best
Bread, Cakes & Pastries*

72 27
NEW ROAD JOHN STREET
PORTHCAWL

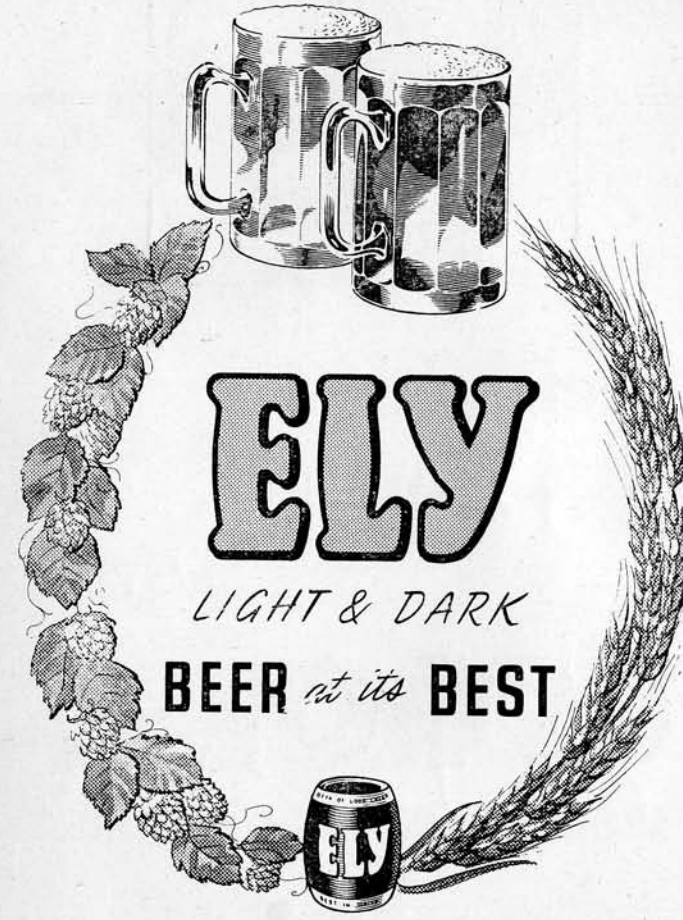
E. Pearce & Co.

FOOTWEAR SPECIALISTS

38, John Street, Porthcawl

Telephone Porthcawl 100

Agents for "NORVIC" "KILTIE" & "K" SHOES



ELY
LIGHT & DARK
BEER *at its* BEST

'FIT FOR A GOLDEN TANKARD'

THE ELY BREWERY CO., LTD., THE BREWERY, ELY, CARDIFF